

# Kit Carson County Dryland & CRP

**Listing Price:**  
**\$764,000**  
**\$2,800 per acre**



**Township 10 South, Range 43 West**  
**North 1/2 less tracts Section 13**

**LISTING #25026**



*call me today!*

**ROBBIE KING, ASSOCIATE BROKER**

**RKING@RXL.LAND**

**Office: 719-346-5420 | Mobile: 719-340-3720**

**1510 Rose Avenue | Burlington, CO 80807**

**Licensed in Colorado & Kansas**

**Your Local Real Estate Agent**

**Specializing in Residential and Farm/Ranch Land**

**Call to List your Property Today!**



**[www.rockingxland.com](http://www.rockingxland.com)**

*Where a Handshake Still Means Something!*

NOTICE \* BROKER HAS GATHERED INFORMATION FROM SOURCES DEEM RELIABLE. ALTHOUGH BROKER MAKES NO WARRANTIES EXPRESSED OR IMPLIED. BROKER SHALL BE REPRESENTING AS A TRANSACTION BROKER. VIEW ADDITIONAL INFORMATION AND PROPERTIES AT [WWW.ROCKINGXLAND.COM](http://WWW.ROCKINGXLAND.COM)

## Features

- 273± Assessed Acres
- 271.87 Dryland & CRP Acres
- 195.31± Cropland Acres
- 67.73± CRP Acres - \$2,583 annual payment, expires 2031
- Current tenant has rights to all growing crops
- 100% of owned mineral rights reserved by seller.
- 2024 taxes: \$1,019.00
- Located southeast of Burlington, CO
- Accessible on County Road 55 & L



*Call me today!*

ROBBIE KING, ASSOCIATE BROKER

RKING@RXL.LAND

Office: 719-346-5420 | Mobile: 719-340-3720

1510 Rose Avenue | Burlington, CO 80807

Licensed in Colorado & Kansas

**Your Local Real Estate Agent**

**Specializing in Residential and Farm/Ranch Land**

**Call to List your Property Today!**



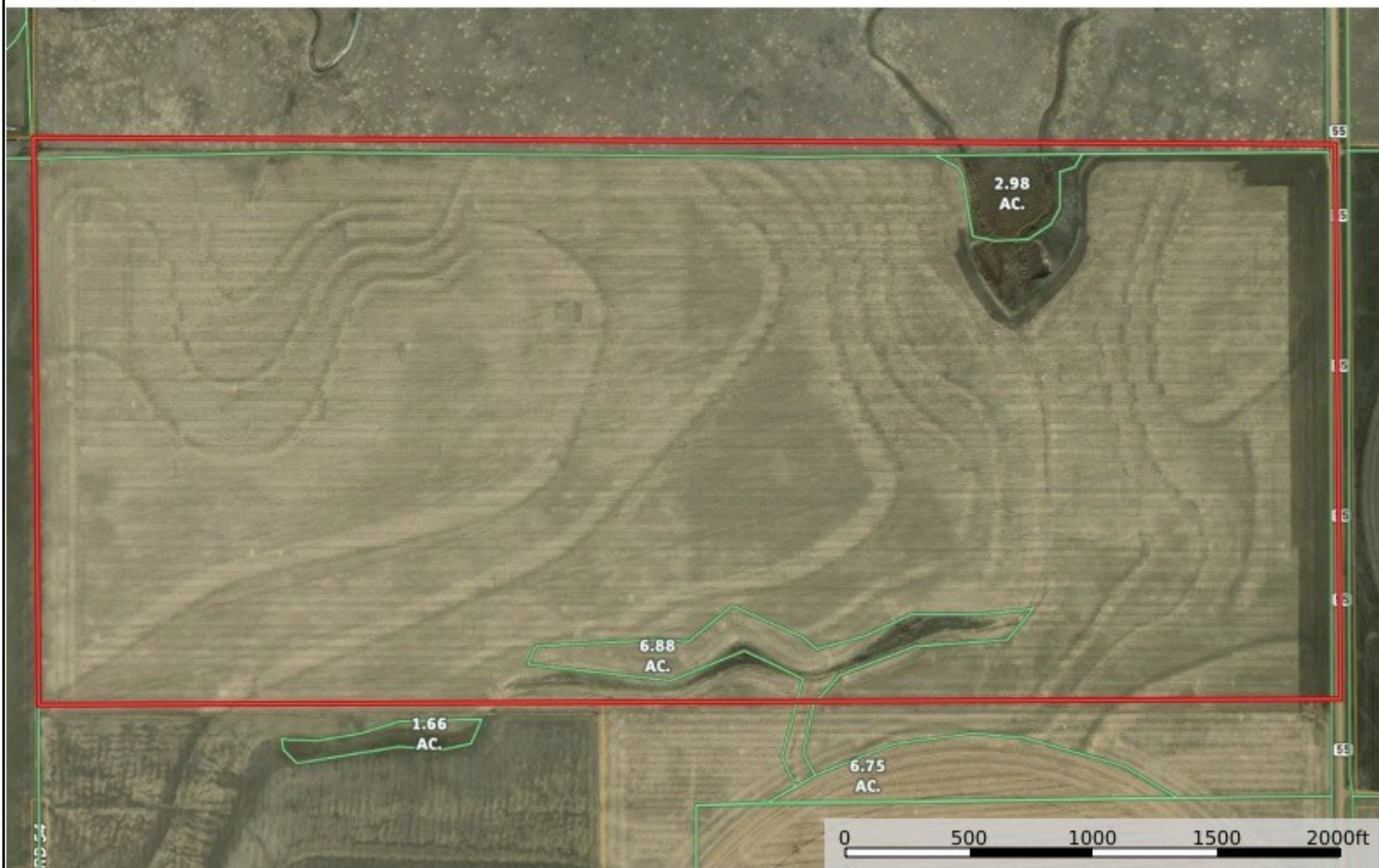
**www.rockingxland.com**

*Where a Handshake Still Means Something!*

NOTICE \* BROKER HAS GATHERED INFORMATION FROM SOURCES DEEM RELIABLE. ALTHOUGH BROKER MAKES NO WARRANTIES EXPRESSED OR IMPLIED. BROKER SHALL BE REPRESENTING AS A TRANSACTION BROKER. VIEW ADDITIONAL INFORMATION AND PROPERTIES AT [WWW.ROCKINGXLAND.COM](http://WWW.ROCKINGXLAND.COM)



**Trahern Land**  
Colorado, AC +/-



Boundary

Robbie King  
P: 7193403720    [www.rockingxland.com](http://www.rockingxland.com)    1510 Rose Avenue

**id** The information contained herein was obtained from sources deemed to be reliable. Land id™ Services makes no warranties or guarantees as to the completeness or accuracy thereof.



*call me today!*

ROBBIE KING, ASSOCIATE BROKER

RKING@RXL.LAND

Office: 719-346-5420 | Mobile: 719-340-3720

1510 Rose Avenue | Burlington, CO 80807

**Licensed in Colorado & Kansas**

**Your Local Real Estate Agent**

**Specializing in Residential and Farm/Ranch Land**

**Call to List your Property Today!**

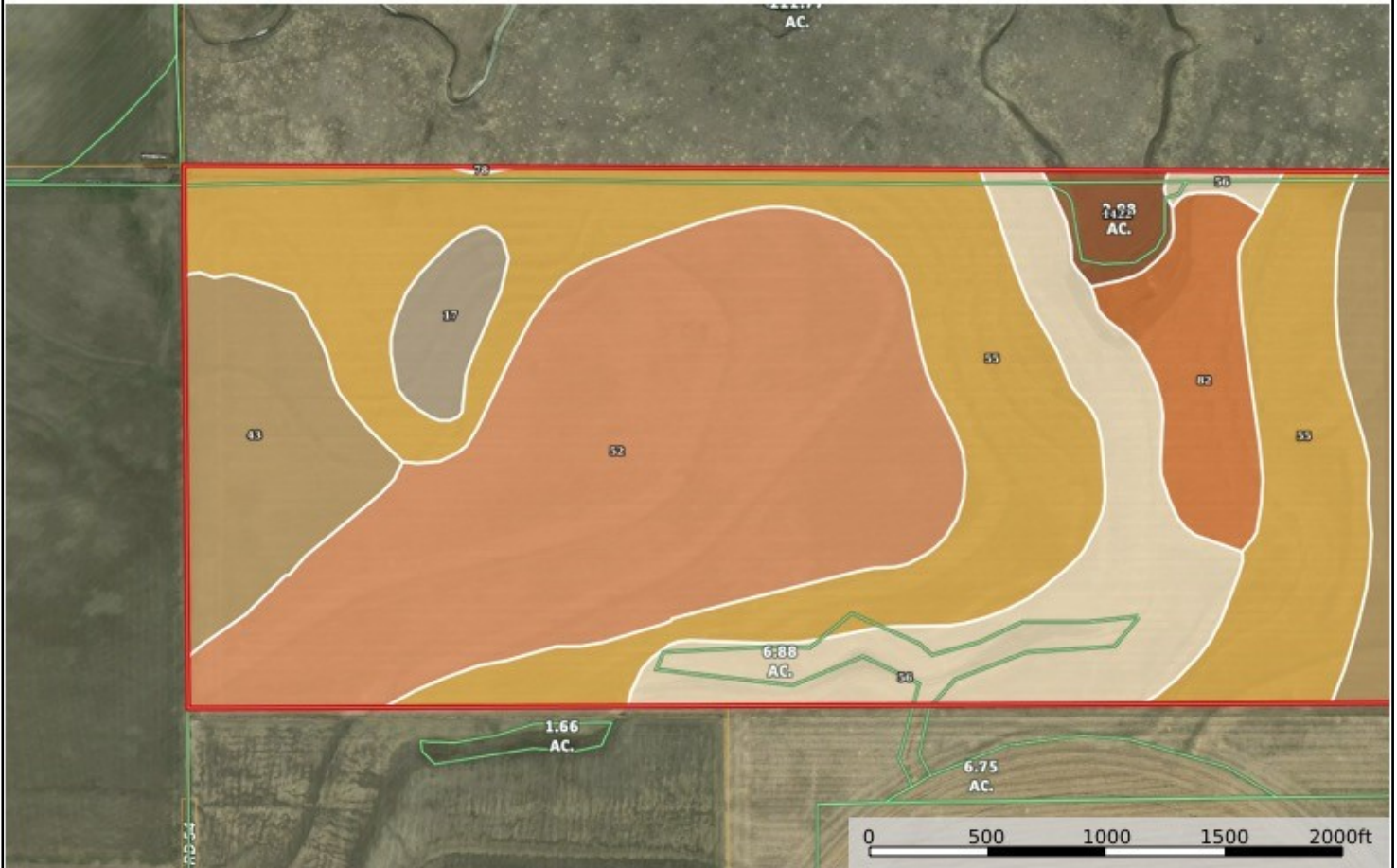


**[www.rockingxland.com](http://www.rockingxland.com)**

*Where a Handshake Still Means Something!*

NOTICE \* BROKER HAS GATHERED INFORMATION FROM SOURCES DEEM RELIABLE. ALTHOUGH BROKER MAKES NO WARRANTIES EXPRESSED OR IMPLIED. BROKER SHALL BE REPRESENTING AS A TRANSACTION BROKER. VIEW ADDITIONAL INFORMATION AND PROPERTIES AT [WWW.ROCKINGXLAND.COM](http://WWW.ROCKINGXLAND.COM)

**Trahern Land**  
Colorado, AC +/-



Robbie King  
P: 7193403720

[www.rockingxland.com](http://www.rockingxland.com)

1510 Rose Avenue



The information contained herein was obtained from sources deemed to be reliable. Land id™ Services makes no warranties or guarantees as to the completeness or accuracy thereof.



*call me today!*

ROBBIE KING, ASSOCIATE BROKER

RKING@RXL.LAND

Office: 719-346-5420 | Mobile: 719-340-3720

1510 Rose Avenue | Burlington, CO 80807

**Licensed in Colorado & Kansas**

**Your Local Real Estate Agent**

**Specializing in Residential and Farm/Ranch Land**

**Call to List your Property Today!**



[www.rockingxland.com](http://www.rockingxland.com)

*Where a Handshake Still Means Something!*

NOTICE \* BROKER HAS GATHERED INFORMATION FROM SOURCES DEEM RELIABLE. ALTHOUGH BROKER MAKES NO WARRANTIES EXPRESSED OR IMPLIED. BROKER SHALL BE REPRESENTING AS A TRANSACTION BROKER. VIEW ADDITIONAL INFORMATION AND PROPERTIES AT [WWW.ROCKINGXLAND.COM](http://WWW.ROCKINGXLAND.COM)





NOTICE \* BROKER HAS GATHERED INFORMATION FROM SOURCES DEEM RELIABLE, ALTHOUGH BROKER MAKES NO WARRANTIES EXPRESSED OR IMPLIED. BROKER SHALL BE REPRESENTING AS A TRANSACTION BROKER. **VIEW ADDITIONAL INFORMATION AND PROPERTIES AT [WWW.ROCKINGXLAND.COM](http://WWW.ROCKINGXLAND.COM)**